



LOUISIANA FLOODPLAIN MANAGEMENT ASSOCIATION

DECEMBER 2010



## Be on the lookout for 2011 LFMA Calendars!!!

*Calendars will be handed out to Region Reps at the  
January Board meeting in Lafayette.*

### In this Issue:

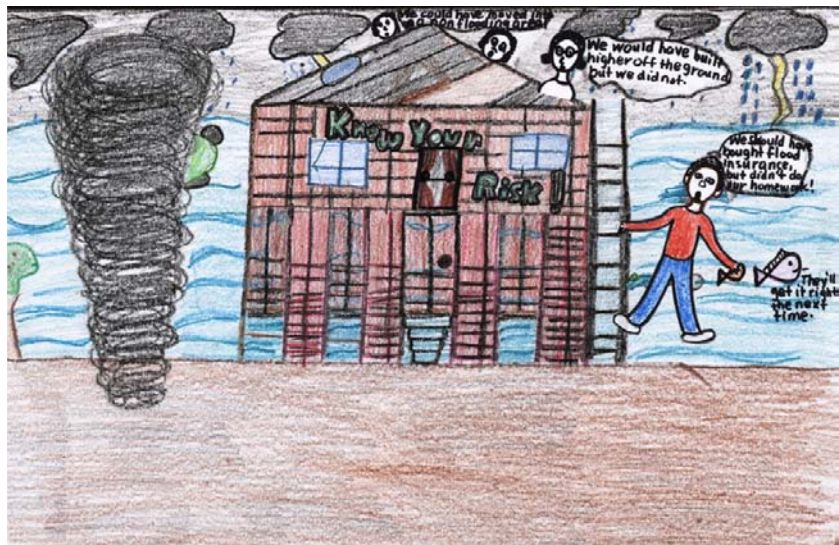
- 1 LFMA Calendars & Poster Contest Winners
- 3 Chairman's Message
- 4 Region Rep Reports
- 9 Fall & CRS Workshop
- 10 Mitigation Corner
- 11 CFM Corner
- 12 The Voice
- 13 NFIP/CRS
- 15 PRP Extension for Property Owners
- 16 NFIP Extended; Floodmap Mobile App
- 17 ASFPM Conference
- 18 FEMA Funds Projects
- 21 Calendar
- 22 Recipe Roundup

### Poster Contest winners:

1<sup>st</sup> Place

Amber Jackson

5<sup>th</sup> Grade, Cherokee Park



2<sup>nd</sup> Place  
Daryl Pickines  
5<sup>th</sup> Grade, Cherokee Park



3<sup>rd</sup> Place  
Ty'Quarion Thomas  
4<sup>th</sup> Grade, Judson Elementary





## **FROM THE CHAIR**

*Well LFMMA has made it through another year and I'm happy to say without any major mishaps in the State. I hope that each of you had a safe and happy*



*year in your respective communities. LFMMA*

*accomplished another successful Annual Conference in Shreveport, Summer Workshop in Welsh, and Fall Workshop in Jefferson Parish.*

*LFMMA is busy making preparations for the Annual Conference once again and the conference will be held down in Lafayette in April 2011 during the Festival d' International. This conference is shaping up to be outstanding. We realize that many communities have suffered budget cuts and limitations so with the conference being so centrally located we hope to have one of the largest participations ever!*

*In cooperation with FEMA Region VI (CAP Program) and the State NFIP DoTD office the 2011 LFMMA Calendars are being printed and will be available to Region Reps during the January 2011 Board Meeting in Lafayette. Region Reps please contact Bonnie Anderson, Mike Hunnicutt, or me and let us know the approximate number of calendars you would like for your region.*

*Again I ask you to do not forget to mark your calendars for future conferences (State and National), workshops and board meetings. Check the website [www.LFMMA.org](http://www.LFMMA.org) as well as this newsletter for dates and locations. We are trying to make the website easier to read and also serve as a historical reference place. If you would like to speak on a special topic, have a topic discussed, or if you would like to host a workshop in your community please contact Darla Duet or myself.*

*Before I close, I'd like to give a heartfelt thanks to Melissa Becker (Editor) of the LFMMA Newsletter; this publication has caused the other four states in Region VI to implement their own newsletters and have stated that they "Will Steal With Zeal" some of the articles they have read in our publication.*

**"KEEP LOUISIANA SAFE THROUGH FLOODPLAIN MANAGEMENT"**

**James R. Demouchet, CFM  
Chairman**

## *A word from your Regional Representative...*

### REGION 1



Wishing everyone a Merry Christmas and Happy New Year.

*Tom Rodrigue, CFM  
Wayne Berggren, CFM*

### REGION 2



I hope this newsletter finds everyone in a wonderful holiday spirit. If you are like us in **East Baton Rouge Parish**, our latest National Flood Insurance Rate Maps (NFIP) have been in effect for a few years. Our current ones became effective May 2, 2008. With the previous 1993 FIRMS, approximately 40% of the area in East Baton Rouge Parish was shown below the base flood. With the new FIRMS, it appears that area

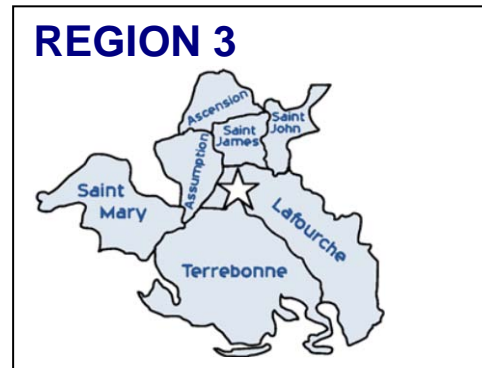
has slightly increased. It appears the overall area covers more land now, but we did not see any significant overall increase in elevations. We did however notice a few localized places where the base flood jumped up significantly.

As with all Parishes, these maps are a huge undertaking for FEMA and their consultant. Lots of work and effort went into creating these new maps. Ours were done with LIDAR data, some best available information, and HEC-RAS dynamic modeling. With big projects, not everything is perfect. That is why FEMA offers an appeal period or a period of restudy where obvious errors may have occurred. We have just been through one that has lasted over a year. It was worth the wait because the restudy team came out to some areas in question and took physical on the ground surveys and gained better incite to the nature of the drainage and floodplain, hence the models were corrected and maps will most likely become more accurate in the very near future.

It is important to be understanding when reviewing the maps given the monumental tasks FEMA is under. When your chance to review, please check for configuration and labeling of the physical features such as roads (within or adjacent to the SFHAs), bridges, and streams, prior to the formal appeal period for your maps. It is also important to identify hidden cross drains, ridges, or

subsurface systems that connect areas where LIDAR may not be able to pick-up. They could make a difference. If you see something that does not look right, be sure to inform FEMA of that. It is easiest if this is done during the appeal period process. You as the community know the "ins and outs" of your systems better than anyone, so be patient and understanding, and assist FEMA so you can assist in getting the best product you can.

*Jim Ferguson , PE, CFM*



NOAA has awarded \$30.7 million to **Lafourche Parish** for the West Belle Pass Restoration Project. This area is one of the most rapidly eroding shorelines in the nation. The project will not only help protect Port Fourchon and Bayou Lafourche, but all of Lafourche Parish from storms and hurricanes.

The West Belle Pass Restoration Project will re-establish the eroded headland west of Belle

Pass by creating new dunes and marshland to help prevent increased erosion in the coming years. Over 90 acres of beachfront will be created with a 6 foot dune elevation and over 200 acres of marshland created on the backside of the beachfront.

Lafourche Parish has started a series of Town Hall meetings regarding a discussion on a proposed location of a Saltwater Control Structure to help prevent future saltwater intrusion.

The Louisiana Office of Community Development-Disaster Recovery Unit has awarded Lafourche Parish over \$2.7 million for our Mathews office. This will allow Parish officials to access the CDBG funds needed to implement the project. After Hurricane Gustav ripped the roof off of the Barrios Building; which housed many Parish offices, government offices were forced to relocate offices to the vacant Wal-Mart in Mathews. This building is large enough to house many Parish offices, but has no infrastructure to properly conduct business operations. This money will also be combined with a Parish dedication to pay for renovations. The funding is part of more than \$1 billion in disaster recovery CDBG money received by the state from the U. S. Department of Housing and Urban Development for damages inflicted by Hurricanes Gustav and Ike. Lafourche Parish was the fifth most damaged Parish from these hurricanes and received a total allocation \$33,633,297.

*Darla Duet, CFM*

## Welcome New Region Rep for Region 3

**Lisa Ledet** was born and raised on the bayous of Terrebonne Parish. A dedicated mother of two grown boys, she began her career with the Terrebonne Parish Consolidated Government in November 1997. She quickly rose through the ranks, starting as a dispatcher, to her current position of Permits Specialist and Floodplain Administrator. She achieved Certified Floodplain Manager status in July 2006 and has made it her goal to assist and protect her fellow residents.



**Terrebonne Parish** is continuing efforts to build safer, stronger and smarter. This month the Parish hurricane Rita HMGP Elevation program is lifting a 6,000 square foot house in Grand Caillou. This is by far the largest home lifted, and will eliminate high insurance claims each storm. This quarter Terrebonne will be requesting approval for the first of at least three reconstructions of storm damaged homes under the parish program. It is expected that the new mitigation method will be more cost effective than elevation and result in better housing stock.

*Lisa Ledet, CFM*



## REGION 4

**St. Martin Parish** date for official usage of the new DFIRM MAP is November 4, 2010. Both the Parish government and municipal government inside the parish have adopted new flood damage prevention ordinances. All of us have been very busy in attempting to educate anyone interested in the grandfathering process. Presently, all of St. Martin Parish is utilizing the identical permitting software for their building department and inspections. All permits fees and inspections fees

are uniform throughout the Parish.

Mr. Lee Hebert (**Acadia Parish**) informed me that all of Acadia Parish has updated their flood damage prevention ordinance as well. Happy holidays!

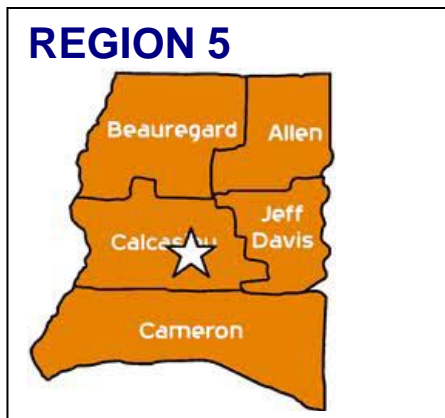
*Shedrick Berard*

**St Mary Parish** – Trying to get some property owners to comply with elevation requirements in the coastal areas. **Morgan City** has provided more information to Region 6 technical team concerning the appeal of the DFIRMS and waiting for results. They are also going through their 5 year Cycle Visit for the CRS program. They received a Resiliency Grant to update their codes.

**Evangeline, Acadia & St Landry** – Working towards adopting the new DFIRMS.  
**Lafayette** – working toward getting into the CRS program... Good Luck to them.

Thanks to all and have a very Merry Christmas and Happy New Year!

*Carl Kraemer, CFM*



**Calcasieu Parish** is moving right along with Elevation/Acquisition projects. We are proud to announce that this year (2010), the Mitigation Team completed 7 acquisition projects. Two of which were under HMGP and 5 under the SRL Program. Three elevation projects are nearing completion but the homes have already been elevated to at least 1 foot above the BFE. One of our Mitigation Specialists, Laurie Cormier, has been chosen by FEMA to participate in the National Review of Hazard Mitigation Assistance

(HMA) applications in Washington, D.C. (all expenses paid) from January 14-17. Laurie states that this is a great honor to have been chosen to represent the Calcasieu Parish Police Jury. Kudos to our Mitigation Team for all of their hard work and dedication! Happy Holidays to all of our LFMA families and friends!

*Dana M. Guidry, CFM*

Our area is in the process of final adoption of our ordinances dealing with the new DFIRMS. Town of Iowa and City of Sulphur adopted their ordinances in December. Wishing everyone Happy Holidays!

*Sandra Turley*

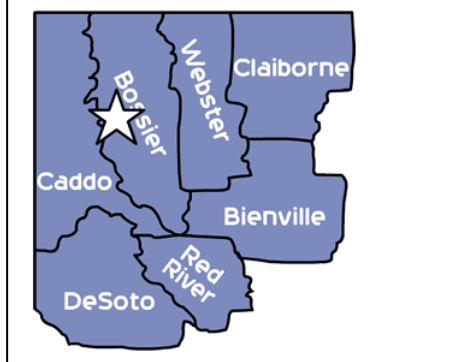


### **Rapides Parish**

The cities of Alexandria and Pineville filed suit this week requesting a temporary restraining order to prevent the issuance of the preliminary maps, which FEMA says should be out in January. The Red River levees in Rapides Parish do not meet the criteria for certification and although the parish has earmarked more than \$16 million in disaster recovery funds to fund the work, FEMA has shown no inclination to consider delaying the new maps. Parish officials believe that FEMA has

set a timetable that is impossible to reach. Merry Christmas and Happy New Year to everyone!

*Melissa Becker, CFM*

**REGION 7****Natchitoches Parish**

Project scoping for the parish is still in progress which includes the City of Natchitoches. According to a FEMA official, certain areas (streams) outlined by the City in its appeal of the preliminary maps are being evaluated and considered for lowering of the base flood elevation. It is anticipated that the work will be completed in a few weeks but there is no concise deadline provided for the development of the DFIRMS.

**Caddo Parish**

Project Scoping 100% complete

Develop Draft DFIRM Database 15% complete, expected completion 06/30/2011

Produce / Distribute Preliminary Deliverables by 07/31/2011

**Total Project Percent of Technical Work Complete: 20%**

**Bossier Parish**

Project Scoping 100% complete

Develop Draft DFIRM Database 95% complete,

Produce / Distribute Preliminary Deliverables were scheduled for 09/30/2010 – the date is scheduled to be updated

**Total Project Percent of Technical Work Complete: 73%**

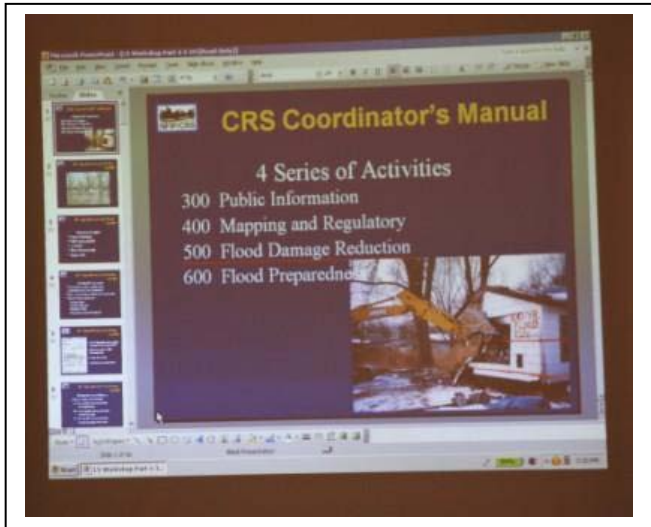
*Juanita Fowler, CFM*

**REGION 8**

Here in **Ouachita Parish**, we wrapped up the 90-day appeals/protest stage of our new DFIRMS. However, in September, the PALs expired on our levee systems. FEMA has started the process of decertifying the levees. FEMA tells us that we should have a Scoping Meeting before the end of the year to start the study for the new maps as if the levees are not in place.

*Lisa Richardson, CFM*

# LFMA FALL WORKSHOP & CRS WORKSHOP HIGHLIGHTS LAFRENIERE PARK, JEFFERSON PARISH



Wayne Bergrenn, FEMA LA TRO  
NFIP Supervisor



Jonathan Smith, ISO



Joe Sloan, FEMA LA TRO  
NFIP Insurance Specialist



Larry Fordham- FEMA LA TRO  
NFIP Insurance Specialist



## THE MITIGATION CORNER

By: Michael D. Hunnicutt, CFM

During the resolution period when FEMA is working with communities to resolve all appeals and protest in order to finalize the flood map and flood study, conflicts or a difference of opinion may occur between FEMA and the community. FEMA has established a new process to help communities resolve issues or conflicts they may have with FEMA not agreeing to information submitted to them. This new process will be a non-bias scientific review of the data submitted. **This issue of the “Mitigation Corner” will explain “The Scientific Resolution Panel (SRP)” and how a community can use this process for assistance.**

A community, Tribe or political entity that has the authority to adopt and enforce floodplain ordinances for the area under its jurisdiction can request FEMA use the SRP when conflicting data are presented. Chief Executive Officers or authorized community representatives must make or endorse the SRP request if they did not develop or propose the conflicting technical data. A community can request an SRP if it has: 1. Not received a Letter of Final Determination (LFD); 2. Submitted an appeal or protest during the 90-day appeal period with scientific or technical data resulting in different flood hazards than those proposed by FEMA; 3. Allowed at least 60 days of community consultation with FEMA (but no more than 120 days)

To request an SRP, the Chief Executive Officer of a community or authorized representative completes an SRP Request Form and submits it to FEMA during the time periods outlined above. Once FEMA confirms the appeal or protest is eligible for an SRP, FEMA will forward the SRP Request form to NIBS to initiate the Panel selection process and develop a list of potential members. Once the Panel is convened, Panel members will be provided with a summary of the issue, FEMA’s data, and the data the community submitted during the 90-day appeal period. Panel member will review the data and, on a point-by-point basis, deliberate and make a decision based on the scientific and technical challenges of the appeal or protest. If the community feels it is necessary to make an oral presentation in support of its appeal or protest, it must include a justification on the SRP Request Form. The Panel will render a written recommendation to FEMA, based on the scientific and technical data submitted by the community and FEMA. The recommendation may either deny the community’s data or incorporate it in part or in whole into the FIRM. For an appeal or protest to be incorporated, the community’s data must satisfy the NFIP standards for flood hazard mapping. The Panel will present a written report with its decision and rationale to FEMA and the community no later than 150 days after being convened. The SRP’s decision will become the recommendation provided to the FEMA Administrator. Once a final determination has been made, FEMA will issue a resolution letter.

FEMA’s mission is to support our citizens and first responders to ensure that as a nation we work together to build, sustain, and improve our capability to prepare for, protect against, respond to, recover from, and mitigate all hazards. If you have any questions about the Mitigation Section of FEMA or any of its programs, you can contact Michael Hunnicutt, CFM, Deputy Section Chief, Hazard Mitigation Division, NFIP/Compliance, FEMA, DHS, at 504-762-2298 or visit FEMA website at [www.fema.gov](http://www.fema.gov).

### The requirements to maintain your ASFPM CFM Certification are:

- You must earn at least 4 of your required CECs in your first year of the two year period.
- Over the two year period, acquire 16 Continuing Education Credits (CEC's), of which a maximum of 12 can be earned in any one year.
- On or before completion of the two years, submit the renewal form (ASFPM will send you) and the appropriate fee for recertification, furnishing a listing of the training and/or education courses you have completed.

**For a current list of ASFPM Certified Floodplain Managers visit:**

[www.floods.org/Certification/certlist.asp](http://www.floods.org/Certification/certlist.asp)



### EXAM OPPORTUNITY

**CFM Exam** will be offered following the E-273 Class in Shreveport, LA on April 1, 2010

Please register at [www.floods.org](http://www.floods.org) click on Certification

**You must be pre-registered. Walk-ins NOT accepted.**



The E-273 Class has been scheduled for March 28<sup>th</sup> – April 1<sup>st</sup>. The CFM Exam will be given on Friday, April 1<sup>st</sup>. The class will be presented at the Holiday Inn at 102 Lake Street in Downtown Shreveport (318) 222-7717. The Holiday Inn rooms are \$74 - \$79 per night. Everyone should schedule their own hotel reservations.

**Cindy N. O'Neal, CFM**  
**Louisiana NFIP State Coordinator**

## THE VOICE

In an effort to better inform communities and local officials within FEMA Region VI, FEMA publishes the *Voice*. The *Voice* is intended to communicate new information about Risk MAP as Risk MAP continues to evolve. To view the most recent issue, October 2010, visit [http://www.rampp-team.com/fact\\_region6.htm](http://www.rampp-team.com/fact_region6.htm).



In this issue:

- **Discovery** – A new interactive process to define projects within the Region based on local needs and input
- **Coordinated Needs Management System (CNMS)** – FEMA's updated system for tracking and identifying your communities mapping needs
- **RiskMAP6.com** – A new portal for preliminary issuance maps

We encourage everyone to check the RAMPP-Team.com website ([www.rampp-team.com](http://www.rampp-team.com)) often for up-to-date postings of the *Voice*, as well as other information. The latest versions, as well as the older versions, are posted to the Region VI Fact Sheets page ([http://www.rampp-team.com/fact\\_region6.htm](http://www.rampp-team.com/fact_region6.htm)).

## Flood Insurance is a *Good Thing* CRS Communities can Encourage Purchase of Policies



**By: Gary Heinrichs and Bruce Bender Co-Chairs  
of the ASFPM Insurance Committee**

*Editor's Note: Communities that participate in the CRS can receive credit points for promoting flood insurance, but that's not the most important reason for supporting the purchase and maintenance of building and contents coverage. This article, excerpted from one that appeared in the Association of State Floodplain Managers' News & Views, reiterates the rationale for making flood insurance a priority in any community's flood mitigation approach.*

Self-reliant, sustainable communities know that flood insurance is the only vehicle guaranteed to assure a smooth and complete recovery from a damaging flood. Experience has shown that an insured community recovers more quickly and more thoroughly than it would if no insurance were in place. Consider that:

- People without the needed financial resources may not be able to make full repairs to their homes after a flood and may move back into an unsafe or unsanitary structure—if they move back at all. In either circumstance, neighborhoods can be prone to deterioration over time, which tends to result in social problems and also undermines the tax base.
- One of out every four damaged businesses does not re-open after a disaster, because they are not financially prepared to do so, according to the Institute of Business and Home Safety. Business closures reverberate through the local economy and the community, as jobs are lost, tax revenues decline, and consumer spending is disrupted.
- Very few floods are declared federal disasters. No declaration means no federal grants, loans, or temporary housing funds for the people or for the local government. And even in the few cases in which there is a disaster declaration, the vast majority of federal assistance to households comes in the form of small, restricted grants and disaster loans.

The good news is that flood insurance can remedy these situations. Renters and homeowners with building and/or contents coverage are assured of quick financial help to recover and to repair or rebuild. Businesses with the proper flood insurance coverage can repair, reopen, and put their employees back to work faster. Further, insured properties are eligible for Increased Cost of Compliance (ICC) payments—an additional source of funding that helps in local redevelopment. All of these circumstances generate a sense of well-being and positive outlook in a flood-damaged community.

Local officials can help their communities get ready for the next flood by making flood insurance a high priority. Here are some ideas:

- Promote the advantages of flood insurance in town newsletter articles, public service announcements, town events, and other outreach projects.
- When residents apply for permits for projects in the floodplain, remind them that their homeowners' policy does not cover flooding, but they can purchase it through their own insurance agent.
- Check the amount—and distribution—of flood insurance coverage in your community to see if some areas need to be targeted for receiving additional information. (CRS communities get a list of local flood insurance policies from FEMA once every year).
- Supply elevation certificates from your building permit files to insurance agents, real estate agents, and property owners.
- Let the insurance agents in your community know that training in flood insurance is available. Better yet, arrange training sessions for them.
- Don't forget to explain the Preferred Risk Policy in all your promotional work.
- Buy flood insurance for community-owned buildings. This sets a good example and also ensures that the community will have financial resources for repair and rebuilding. Remember, even if a federal disaster is declared, the amount of assistance provided for flood-damaged public property will be reduced by the amount of insurance coverage the community should have had.

Article reprinted from the *NFIP/CRS Update August - September 2010* [excerpted from ASFPM's [News & Views 22\(5\) 2010](#), pp. 8-9]



## PRP EXTENSION FOR PROPERTY OWNERS



### Why the PRP Extension?

Flood maps are changing as the assessment of flood risks changes due to community development, aging flood control structures, natural changes to topography, and better technology. The [NFIP](#) wants to ease the transition for property owners who have been newly mapped into a high-risk flood zone and the mandatory flood insurance purchase requirements that go along with map changes. If your property was newly mapped into a high-risk flood zone on or after October 1, 2008, you may be eligible for the lower-cost [Preferred Risk Policy](#) for up to 2 years after the latter of the two following dates:

- The effective date of the map revision, or
- January 1, 2011

### Who is eligible?

- Property owners of buildings that have been newly mapped into high-risk flood zones (e.g., labeled with A, AE, AO, AH or V, or VE on the flood maps) due to a map revision on or after October 1, 2008, and before January 1, 2011, are eligible to receive a PRP for two policy years effective between January 1, 2011 and December 31, 2012. So, policies issued as standard-rated policies or converted to standard-rated policies following a map change on or after October 1, 2008, could be converted to the lower-cost PRP for two years beginning on the first renewal effective on or after January 1, 2011. On the third year, they may then be eligible for additional savings through [grandfathering](#).
- Property owners of buildings that are newly mapped into a high-risk flood zone due to a map revision on or after January 1, 2011, are eligible to receive a lower-cost PRP for two policy years from the map revision date. On the third year, they may then be eligible for additional savings through [grandfathering](#).

**What you will need to do:** Talk to your agent. Previous and current flood zone documentation for your property will be needed to validate your PRP extension eligibility. Historic maps and current effective maps are available through FEMA's Map Service website: [www.msc.fema.gov](http://www.msc.fema.gov). If you have questions or would like more information, you can call the NFIP Help Center at 1-800-427-4661 for assistance.



## NFIP EXTENDED THROUGH SEPTEMBER 30, 2011

*[Excerpted from ASFPM's Member Alert, September 24, 2010]*



The House of Representatives passed a one year extension of the National Flood Insurance Program, extending the current program through September 30, 2011. The Senate passed the bill, S. 3814, on September 21 and the House passed it by voice vote on September 23. The measure now goes to the White House for the President's signature, which is expected to happen quickly. This is a clean extension, with no other provisions in the bill. (Full details can be found by searching for bill number S. 3814 on <http://thomas.loc.gov>)

The NFIP's authority had been set to on September 30, 2010. After several short-term authorizations this year and several periods of hiatus when new or renewing policies could not be written, this one year extension provides important stability and reliability to FEMA, Write Your Own insurance companies, realtors, homebuilders, home buyers and sellers, and to current policy holders.

During the one year reauthorization, FEMA and the Congress will continue their consideration of needed reforms to the NFIP. ASFPM will continue to provide comments to both FEMA and members of Congress as progress on reforming the program continues.



## NEW "FLOODMAP MOBILE" APP

PBS&J launched FloodMap™ Mobile for Apple iOS and Google Android smart phones. This app uses your GPS or user-defined location to provide you with critical flood hazard information and flood insurance cost estimates while linking to valuable flood resources.



From a map location, FloodMap™ Mobile will display the following map data from FEMA: Flood Zone Areas Base Flood Elevations (BFE) and Cross Sections; Letter of Map Amendment and Revision (LOMA & LOMR); and Map Panels. The FEMA data is displayed in a mash-up on a Google® base map with USGS and NOAA stream gages.

FloodMap™ Mobile will then retrieve USGS ground elevation and Zillow® property value to present you with a flood hazard report. In the report, you will find:

- FEMA Information: Zone, Region, Community Number, Map Number, Map Dates, Jurisdiction Name

- USGS Elevation & Topographic Map Name
- Approximate Insurance Cost
- Insurance Agents in Your Community
- Community Rating System Participation and Insurance Discount, if applicable.

[View FloodMap™ Mobile in the Apple iTunes Store](#)

[View a slide presentation for FloodMap™ Mobile](#)

Contact us about FloodMap™ Mobile at [floodmapmobile@pbsj.com](mailto:floodmapmobile@pbsj.com)



## ASFPM SEEKS LOCAL FLOODPLAIN MANAGERS TO PRESENT AT 2011 CONFERENCE

Every year following our conference, ASFPM receives requests for more local content, topics, and speakers to present at our National Conference. Increasingly, we receive requests for topics which provide locals the tools and ideas that they can implement back in their community. While we make great efforts to provide opportunities for these topics on our conference agenda, we can only consider the presentations that are actually submitted. This year we're challenging our chapters and their members to help us fill this gap!



Do you know a local with great stories who has faced obstacles or opposition on the job and overcame it? What about a floodplain manager who's the "go-to" person on a specific topic or best practice? Have you partnered or collaborated with a local on a specific project, initiative or disaster? Has your experience on the job provided you with "lessons learned" to share with other locals who can benefit from your experience? We urge you to reach out and encourage them to submit a presentation (or better, submit one yourself!) for our 2011 National Conference in Louisville, KY, May 15-20, 2011. Attending the conference as a presenter or workshop instructor is a great way to get buy-in from your supervisor to attend the conference. Locals know better than anyone the daily hurdles other local floodplain managers face.

Concurrent Session presentations are 20-25 minutes in length; Workshop topics are between 1 hour and 4 hours in length. More than one presenter can be a part of the presentation – either Concurrent Session or Workshop- so you don't have to do it alone! ASFPM needs the wisdom of your front-line experience to help provide professional development opportunities to other locals – please help us make it possible! Details on how to submit a presentation topic or

workshop for consideration can be found on the ASFPM [2011 Conference Page](#) of the ASFPM website. The deadline for the concurrent session abstracts and workshop topic submittals is October 31, 2010.

For questions regarding concurrent session topics, contact Steve McMaster, Conference Program Chair at [steve.mcmaster@nebraska.gov](mailto:steve.mcmaster@nebraska.gov). For questions about presenting a workshop please contact Kait Laufenberg, Workshop Coordinator at [Kait@floods.org](mailto:Kait@floods.org).

### Award Nominations Sought for ASFPM 2011 Conference

ASFPM is currently accepting award nominations from Chapters and their members for consideration and recognition at the 2011 Conference in Louisville, KY, May 15-20, 2011. A full listing of the ASFPM Awards with description of qualifying criteria can be found on the [Awards Page](#) of the ASFPM website. We're always looking for nominees from local government for the James Lee Witt Local Award (awarded to exemplary local programs or projects) and the Larry R. Johnston Local Floodplain Manager of the Year Award (recognizing exceptional local professionals). To nominate a floodplain manager for consideration, please submit the [Nomination Form](#) online per instructions on the form page. Award nominations are due via the online form no later than March 1, 2011.

If you have questions about an award or the process, please contact Diane Brown, Communications Manager at [diane@floods.org](mailto:diane@floods.org).



## FEMA ASSISTS ST. CHARLES PARISH WITH PUMPING STATIONS, CULVERTS

Release Date: September 23, 2010  
Release Number: 1603-905



HAHNVILLE, La. – The Federal Emergency Management Agency and the Governor's Office of Homeland Security & Emergency Preparedness recently announced **more than \$15.4 million** for hazard mitigation projects within St. Charles Parish. These improvements will increase culvert capacity and allow pumps to operate at optimal capacity.

"The residents and businesses of St. Charles Parish will benefit from the pumping station and culvert improvements," said Mike Karl, FEMA's Louisiana Recovery Office interim director. "These improvements will serve as effective protection against flooding for generations."

Pump improvements include the addition of automatic bar screen cleaners at four stations: Diane, Eighty Arpent, Engineers and New Sarpy. Eighty Arpent will also receive two additional pumps.

Debris quickly gathers on the existing bar screens at the four stations and prevents them from operating at their maximum pumping capacities. The new automatic bar screen cleaners will better prevent this debris build-up, while the two additional pumps at the Eighty Arpent station will increase water pumping capacity. These improvements will assist in reducing flooding in residential neighborhoods.

Additionally, the parish will use FEMA funds to improve three culverts in residential areas: the Ormond Boulevard Crossing, Willowdale Box and #10 Canal Road Crossing. The improved culverts will reduce flooding and improve public safety. They should also result in a decline in National Flood Insurance Program claims.

Improvements at the pump stations and culverts are expected to be completed in approximately three years.

All hazard mitigation work funded with these federal grants will comply with the latest building codes and parish flood plain regulations.



## MITIGATION FUNDING TO IMPROVE STUDY, SLIDELL'S WATER DRAINAGE

Release Date: September 24, 2010  
Release Number: 1603-906



SLIDELL, La. -- The Federal Emergency Management Agency and the Governor's Office of Homeland Security & Emergency Preparedness recently announced **more than \$6.7 million** in mitigation funding for the City of Slidell's storm water drainage project and to improve pump stations. The improved drainage and pump systems will better protect Slidell residential and business structures from flooding.

This hazard mitigation grant funds the first phase of Slidell's water drainage improvement project, which includes a hydrologic and hydraulic study, engineering design plans, a geotechnical study, a feasibility study and securing applicable permits. Information gathered during this phase is necessary to complete a full review of Slidell's storm drainage system and to perform second phase improvements.

As a result of this project, Slidell's water drainage system, which consists of four canals, will ultimately be improved to alleviate flooding throughout the city. The drainage canals affected are: City Barn, W-15 Lateral, Eastwood Storm Drain Line and Markham/Peachtree Drainage. The first phase's activities should be completed in approximately one year.

"Slidell will be much better protected as a result of this funding," said Mike Karl, FEMA's Louisiana Recovery Office interim director. "The first phase of this project is essential to ensuring Slidell receives quality protection against the flooding of homes and businesses."

The funding will also go toward improving the city's two drainage pump stations, City Barn and Schneider Drainage. Improvements to these pump stations should be completed in approximately three years.



## FEMA FINANCIAL SUPPORT GRANTED TO ST. BERNARD PARISH RECOVERY

Release Date: September 29, 2010  
Release Number: 1603-907



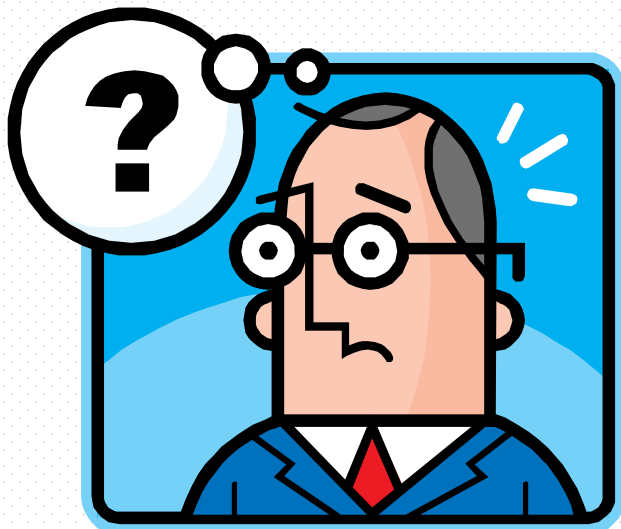
NEW ORLEANS, La. -- The Federal Emergency Management Agency announced today **more than \$14.4 million** in additional federal aid to St. Bernard Parish for Katrina-related damages.

The following recovery projects in St. Bernard Parish are the recipients of these recently obligated federal dollars:

- **The St. Bernard Parish Civic Center:** Approximately \$4.8 million to help repair the facility that is the main site for community and civic functions in the parish. The parish used federal funds to repair the facility to pre-Katrina condition and introduce hazard mitigation measures, such as the elevation of HVAC pumps and electrical components, to reduce the risks associated with future flooding. The civic center is reopened and operational.
- **St. Bernard Street Repairs:** More than \$8.2 million funds the repair of non-federal parish streets, curbs and sidewalks to pre-Katrina conditions. Floodwaters and heavy debris removal equipment caused significant damages to parish streets. Other street-related projects fall under the responsibility of the Federal Highway Administration. Repairs are underway.
- **Riverbend Oxidation Pond:** More than \$1.4 million assists in the removal, dewatering and transport of sewage waste from this facility. Sludge accumulated after the parish pumped and hauled a high volume of waste to the Riverbend Oxidation Pond when sewer lift stations suffered Katrina-related damages and reduced their abilities to contain sewage. Sludge removal is underway.

“This FEMA funding is the result of us working tirelessly with St. Bernard Parish and the state to maximize the amount of eligible funding,” Andre Cadogan, Deputy Director of Programs at FEMA’s Louisiana Recovery Office, said. “FEMA continues to develop new recovery solutions, such as this funding, that fall within the existing rules and regulations. We look forward to continuing our work with St. Bernard Parish on future recovery projects.”

FEMA has obligated **approximately \$960 million** for recovery projects in St. Bernard Parish since Hurricane Katrina.



### Floodplain Manager Question???

Should I accept a copy of an Elevation Certificate for compliance?

#### Answer:

It is FEMA’s recommendation that the community get an original copy with an original signature. The regulations and model ordinance do not address this issue, FEMA 467-Elevation Certificate states that a community should obtain an original copy.

Diana B. Herrera, CFM  
Natural Hazards Program Specialist  
FEMA Region VI Mitigation Division

A CRS community is required to have original EC’s to be in their program.

Wayne Berggren  
NFIP Group Supervisor  
FEMA LA TRO

★ ★ ★ ★ ★ ★ ★ ★ ★ ★  
Calendar of Events

## 2011

### March 28 – 29

E-273 Class  
Holiday Inn  
Shreveport, LA

### April 27 – 29

LFMA Annual Conference  
Holiday Inn  
Lafayette, LA

### May 15 – 20

ASFPM Annual Conference  
Galt House Hotels & Suites  
Louisville, Kentucky

### July

LFMA Spring Workshop  
Monroe, LA



## *LFMA Recipe Roundup*

### **Crawfish Etouffee'**

- 1 lb crawfish w/ fat
- 1 stick of butter
- 1 cup green onions finely chopped (only greens)
- 1 or 2 teaspoon(s) Paprika
- 3 tablespoons flour
- 1 can chicken broth or 2 cups water



Melt butter, add onions, sauté' until wilted and disintegrating. Add flour and stir constantly until well mixed ... **DO NOT BROWN**  
Add broth, salt and pepper, let simmer for 20 minutes.  
Add crawfish tails and simmer for 20 minutes.  
Add green onion tops before serving.

### **Cream Cheese Cookies**

- ¼ cup butter
- 8 oz. cream cheese
- 1 egg yolk
- ¼ teaspoon vanilla
- 1 box yellow cake mix

Cream butter and cream cheese. Blend in egg yolk and vanilla. Add yellow cake mix, 1/3 at a time.  
Chill dough 30 minutes.  
Use cookie press or drop by teaspoon.  
Bake for 8 to 10 minutes at 375<sup>0</sup>.

*Submitted by: Darla Duet*

Louisiana Floodplain Management Association  
P.O. Box 64275  
Baton Rouge, LA 70896



## LFMA Regional Representatives and Board Members

### Region I

Wayne Berggren, CFM  
(504) 762-2296  
[wayne.berggren@dhs.gov](mailto:wayne.berggren@dhs.gov)

Tom Rodrigue, CFM  
(504) 349-5360  
[Torodrigue@jeffparish.net](mailto:Torodrigue@jeffparish.net)

### Region II

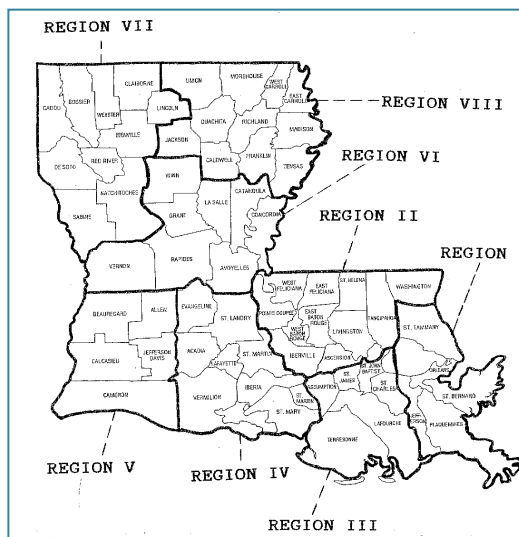
Jim Ferguson, CFM  
(225) 389-3186  
[jFerguson@brgov.com](mailto:jFerguson@brgov.com)

Toni Jo Simon  
(985)542-2117  
[tsimon@tangipahoa.org](mailto:tsimon@tangipahoa.org)

### Region III

Darla Duet, CFM  
(985) 537-7603  
[darlada@lafourchegov.org](mailto:darlada@lafourchegov.org)

Lisa Ledet, CFM  
(985) 873-6567  
[lisaledet@tpcg.org](mailto:lisaledet@tpcg.org)



NFIP COORDINATOR  
CINDY O'NEAL, CFM  
[Cindy.ONeal@LA.GOV](mailto:Cindy.ONeal@LA.GOV)  
225-274-4354

### Region IV

Carl Kraemer, CFM  
(985)-380-4716  
[c.kraemer@cityofmc.com](mailto:c.kraemer@cityofmc.com)

Shedrick Berard  
(337) 582-2230  
[Shedrickberard@bellsouth.net](mailto:Shedrickberard@bellsouth.net)

### Region V

Sandra Turley  
(337)582-3535  
[Sandra@iowala.org](mailto:Sandra@iowala.org)

### Region VI

Melissa Becker, CFM  
(318) 487-5401  
[mbecker@rapc.info](mailto:mbecker@rapc.info)

### Region VII

Juanita Fowler, CFM  
(318) 357-3840  
[jfowler@ci.natchitoches.la.us](mailto:jfowler@ci.natchitoches.la.us)

### Region VIII

Lisa Richardson, CFM  
(318) 398-9780  
[lrichadson@oppj.org](mailto:lrichadson@oppj.org)

**CHAIRMAN:** James Demouchet, CFM  
(318) 226-6934  
[jdemouchet@caddo.org](mailto:jdemouchet@caddo.org)

**VICE CHAIR:** Bonnie Anderson, CFM  
(337) 896-7971  
[planning@carencro.org](mailto:planning@carencro.org)

**SECRETARY:** Dana Guidry, CFM  
(337) 721-3600  
[dguidry@cppj.net](mailto:dguidry@cppj.net)

**TREASURER:** Mike Hunnicutt, CFM  
(504) 762-2298  
[michael.hunnicutt@dhs.gov](mailto:michael.hunnicutt@dhs.gov)

**Executive Director :** Theodore E. DeBaene, CFM  
(225) 926-5125 [ted@owenandwhite.com](mailto:ted@owenandwhite.com)

**Workshop Coordinator:** Darla Duet, CFM  
(985) 537-7603 [darlada@lafourchegov.org](mailto:darlada@lafourchegov.org)

**Awards/Education Committee:** Pam Mattingly, CFM  
(337) 721-3600 [pmattingly@cppj.net](mailto:pmattingly@cppj.net)

**CAP-SSSE:** James Demouchet, CFM  
(318) 226-6934 [jdemouchet@caddo.org](mailto:jdemouchet@caddo.org)

**Newsletter Editor:** Melissa J Becker, CFM  
(318) 487-5401 [mbecker@rapc.info](mailto:mbecker@rapc.info)

*Floodwatch is published by the Louisiana Floodplain Management Association. Information and opinions contained herein do not necessarily reflect the views of all members. Items for publication and other editorial matters should be directed to the Editor: [mbecker@rapc.info](mailto:mbecker@rapc.info)*